

Dalang & Co.

MONDKIND



Technical Rider

CONTENTS:

1. Mondkind Crew & Contact
2. Super short description
3. Performance area requirements
4. Stage, set, props, costumes
5. Stage plot
6. Light, video
7. Light plot
8. Sound
9. Personnel and schedule
10. Dressing rooms and hospitality



1. MONDKIND CREW & CONTACT

Production: Dalang & Co.
Frida Leon Beraud
email: frivis@gmx.de
phone: +41 79 63 49 189

Personnel travelling with: 3
Performers (2): Frida Leon Beraud, Jorge Arbert

Technical direction: Minna Heikkilä
email: mpheffects@gmail.com
phone: +41 76 21 21 281

Sound: Leo Hofmann
email: contact@leohofmann.com
phone: +41 76 46 19 156

Duration: ca. 50 minutes, without intermission

All indications of this technical rider are exhaustive and a part of the contract between the venue and Dalang & Co. Any modifications are only allowed after consulting the company. Every new version cancels the previous one.

2. SUPER SHORT DESCRIPTION:

Mondkind (Moonchild) is a performance for young audiences (9yrs +) about being different. The two performers tell a story of searching one's true self from a point of view of a creature from another world by using music, dance, puppetry and non-verbal language as medium.

3. PERFORMANCE AREA REQUIREMENTS:

Ideal size of the stage is 10 (wide) by 10 (deep) meters. The audience seating should be on the same level as stage. Proscenium stages are unfortunately not suitable for our performance, since we are using relatively small objects directly on stage floor level.

The floor needs to be clean, even and smooth, covered with black marley / dance floor.

Black masking on stage sides and a full size backdrop with middle entrance, Molton or velvet etc.

4. STAGE, set, props, costumes:



Photo 1: Rope curtain



Photo 2: Detail of the construction

We will bring with us:

- 6-7 units of white rope curtain, see photo 1, 2
to be connected together and hanged upstage
size per unit: 1m (wide) x 11m (long),
weight ca. 25,1 kg per unit, 11,1 kg (hanging load)
Total width: 6 or 7 meters
Total weight: 175 kg (transport), 90 kg (hanging load divided equally over 7m)

The rigging height of the curtain is 5,00 meters on upstage, ca. 6,5 meters behind the stage front edge. The rest of the curtain is laid on the downstage area to form "flooring".

- 1 globe, diameter 30cm, attached to any light fixture see photo 3, page 4
to be hanged on side stage right
- 1 collapsible fur-ball see photo 4, page 4
Moves during the performance
- 2 puppets (Neil Armstrong and Mondchild)
- 2 Fresnell lenses with Infrared controlled LED-lights see photo 5, page 4

Costumes for 2 performers

The exact positions of the rope curtain and globe are indicated in the light plot.

STAGE, set, props, costumes (continued):



Photo 3: Globe



Photo 4: Fur-ball



Photo 5: Fresnell lens

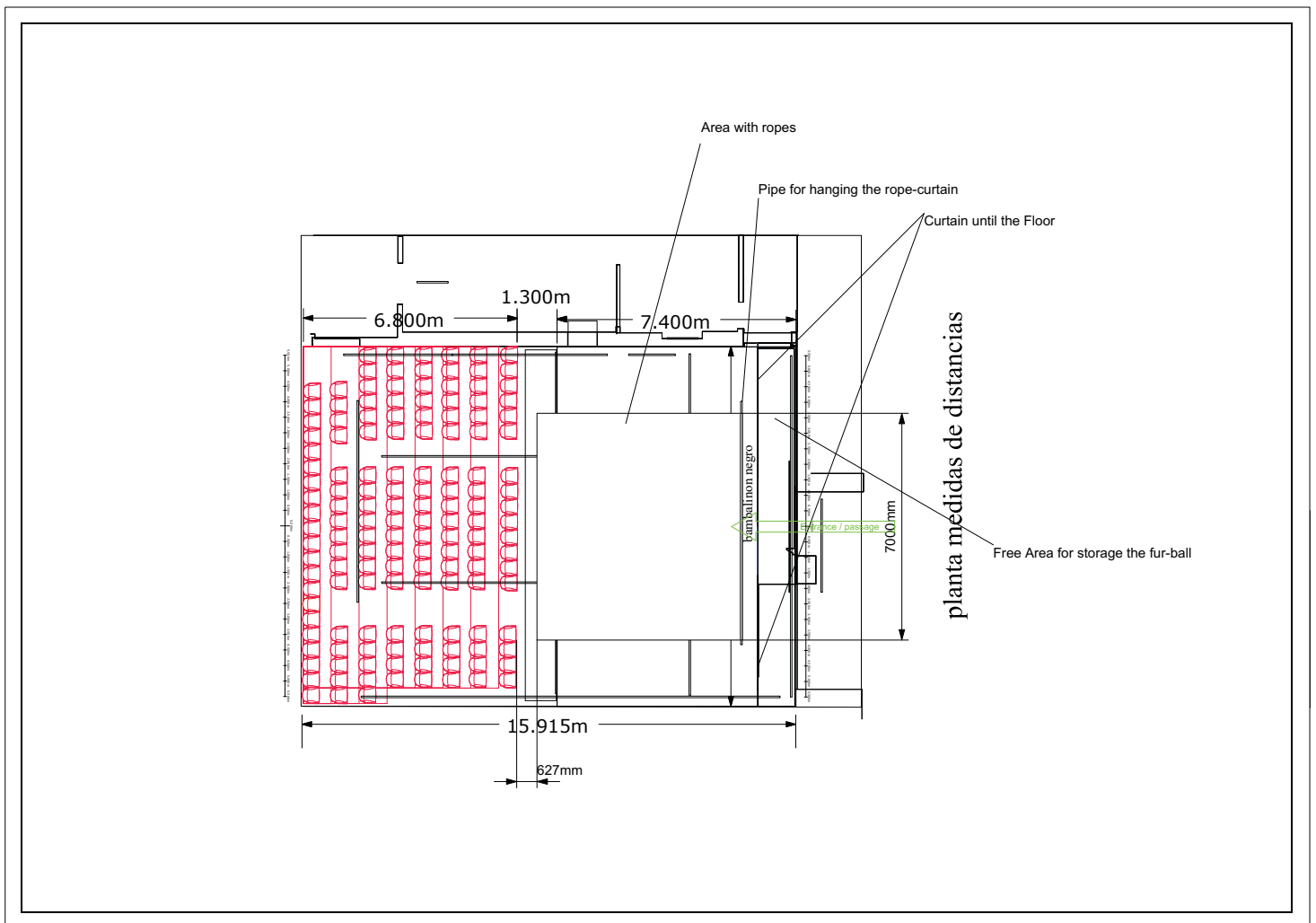
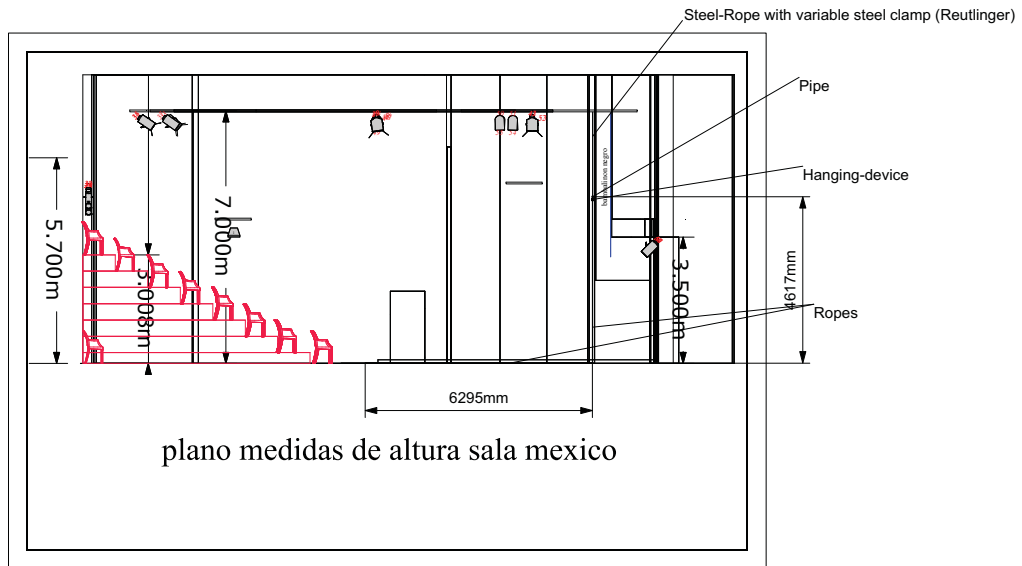


Photo 6: Oscillating fan

We need from you:

- 1 Small smoke machine with remote control, preferably DMX
- 1 BLACK oscillating fan / ventilator (w swing function) see photo 6
Position: Upstage CL, behind the rope curtain
- 1 rigging gear for a video beamer

5. STAGE PLOT:



6. LIGHT, VIDEO:

We will bring with us:

- | | | | |
|---|---|-----------------------------|-------------|
| 3 | Cameo Flat Pro Flood IP65 TRI Led fixture | upstage rig | see photo 7 |
| 1 | Sony HD Handheld Video camera with mini tripod | downstage right | |
| 1 | Video Beamer for a front projection on rope curtain | CL above audience | |
| 1 | Set of HDMI over Ethernet Distribution system | from video camera to beamer | |

The above mentioned units need direct power

- | | | |
|---|--|-----------------|
| 2 | Fresnell lens with Infrared LED-lights | photo 5, page 4 |
| 1 | GrandMa2 OnPC with 2-port Node | |

See position for individual objects on light plot.



Photo 7: Cameo

We need from you:

Please see attached general light plot for detailed information. Please provide technical drawings of your venue minimum 4 weeks before the scheduled performance date, so that an adaptation of the light can be made for your space.

rigging height: 5m

Fixtures with filter frames:

- | | | |
|----|--|---------------------------------|
| 5 | 1kW PCs with barndoors (such as Robert Juliat) | frontlight |
| 15 | Par64 CP62 | toplight |
| 5 | ETC Source 4 25-50 profile | sidelight/floor + special front |
| 1 | 500-1000W Assymmetric Flood + barndoors | back light |
| 1 | pinspot, Par 36 | special Moon |

Any house lights for the audience area, dimmable over dmx

- | | | |
|---|--|-------------|
| 5 | floor stand plates (for the 4 ETC S4 + Floor) | see photo 8 |
| = | 27 (2kW) dimmer channels + your house lights | |
| | 3 units that need direct power | |



Photo 8: Floor plate

Color Filters:

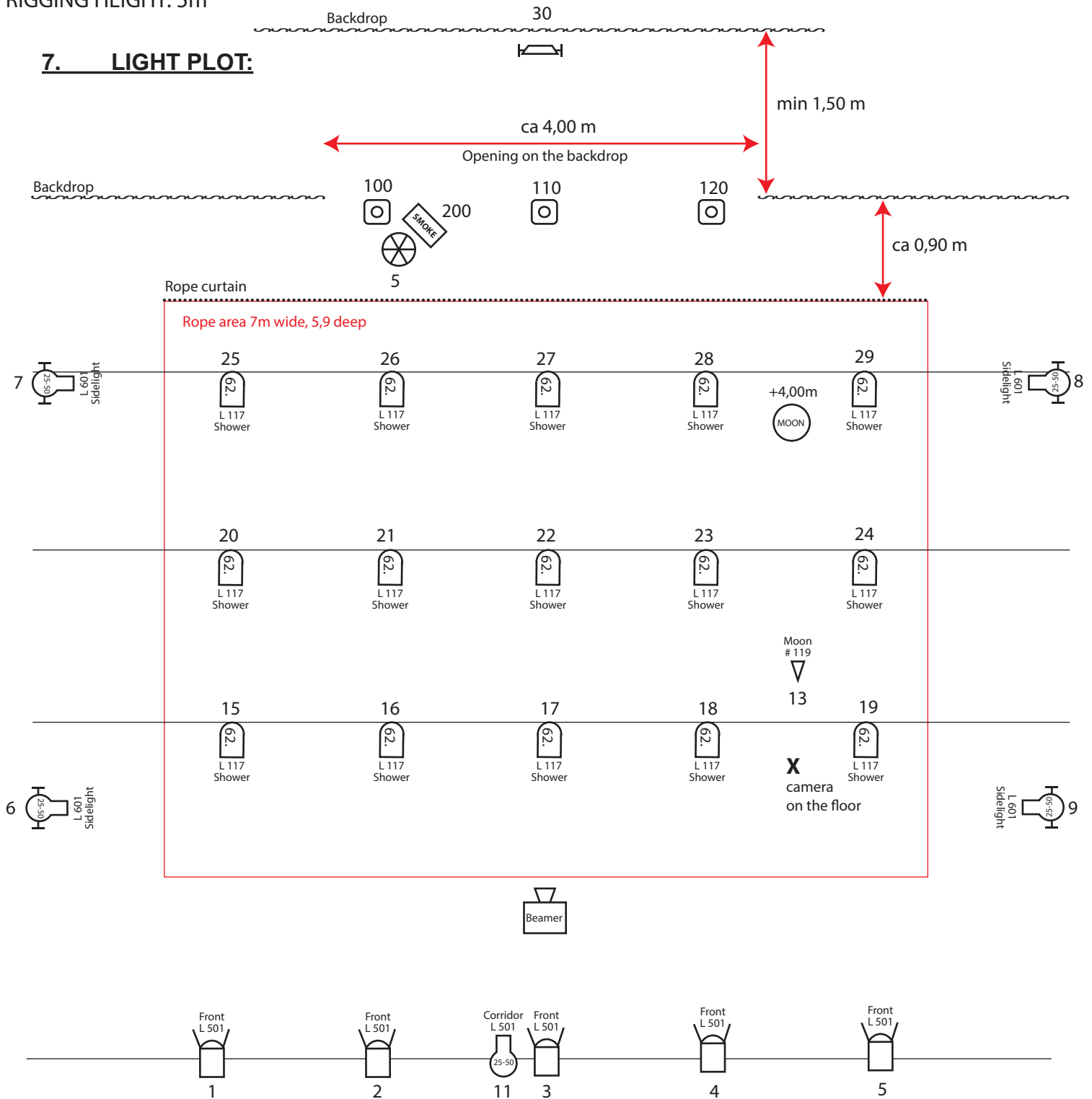
- | | | |
|------------|---------------------|-----------------------------|
| Lee 117 | Steel Blue | 15 x Par64 |
| Lee 501 | Robertson Blue | 5 x 1kW PC |
| Lee 601 | Silver | 5 x ETC Source 4 profile |
| Rosco #119 | Light Hamburg Frost | 1 x Par36 Pinspot |
| | | (15 x Par64 if rig < 5.00m) |

We need physical 5-pin dmx-connection on the FOH, NO ethernet, art-net etc!

The controls for sound and light must be arranged on FOH so, that one person can reach both from one position.

RIGGING HEIGHT: 5m

7. LIGHT PLOT:



Dalang & Co:
MONDKIND

Light plot for preliminary use / Minna Heikkilä / LD

Contact:
Minna Heikkilä / Tech
tel. +41 76 21 21 281
email. mpheffects@gmail.com

Scale: 1/50/A4

Legend:

	Robert Juliat PC 1kW + Barndoors	5
	Par 64 CP 62	15
	ETC S4 Zoom 25-50 deg	5
	Pinpoint	1
	Cameo Flat Pro Flood IP65 TRI	3
	500 or 1kW Flood + Barndoors	1
	Small smoke machine with (DMX) remote	1
	Ventilator	1

Units:

Key:

Channel

Color Purpose

Colors used:

L 117 Steel Blue
L 501 Robertson Blue
L 601 Silver
119 Light Hamburg F

What we need to achieve:

- Even front wash for whole stage, half way up to the curtain, color L 501
- Sidelights covering as much of stage as possible, cut off from curtain and audience, color L 601
- Direct top shower wash with Par 64's, color L 117
- Front corridor with S4, as big as possible, minimum 3 meters wide, color L 501
- Moon pinpoint should be on 4 meters height if possible, as direct front spot for the globe, frost #119

8. SOUND:

We will bring with us:

- 1 Laptop with MaxMSP
- 1 audio interface, 4 channel, Roland Octa Capture
- 1 wireless sender

- 2 sensors (black & white)
- 1 Xbee-receiver

- 1 Bluetooth loudspeaker, BOSE, (black)
- 1 wireless receiver

- 1 charging cables for sensors (2x Mini-USB)
- 1 AA-battery charging station

We need from you:

Normal stereo sound-system / PA with subwoofer, covering the whole stage and audience area, with possible monitoring for the performers

- 1 Speaker to be rigged above our Moon Globe

- 2 stereo channels to the house PA
- 1 for the Moon Globe speaker
- 1 for our wireless sender

9. PERSONNEL AND SCHEDULE:

We need from you:

- 1-2 English/German-speaking technicians with knowledge of light/sound and full access to all house systems for the get-in and the shows.

Get-in time: Preferably one day before the first show.
Minimum 8 hours before show-time if on same day,
if the dance floor is already laid and taped.

Preparing stage/warm-up: 2,5 hours on all the performance days
The rope curtain needs to be straightened and arranged as
seen in photo 1 (page 2). This will take approximately 1 hour.

Strike: ca. 2 hours, directly after the last performance

9. DRESSING ROOMS AND HOSPITALITY:

1-2 dressing room(s) close to the stage with a hot shower, equipped with mirror, a table, two chairs and costume rail. Please, provide bath towels.

A supply of good-quality drinking water, preferably bottled.

Snacks to be provided for three persons: fruit juices, water, tea, coffee, fresh fruits, sandwiches / biscuits / cakes and chocolate.

Please have this available already during the get-in.